



RA 12-100H (12V100Ah) (360w/cell)

RA12-100H is high rate series with 10 years floating design life, especially designed for high rate load discharge applications. By using strong grid and specific paste plate to insure high performance during big current discharge requirement when electricity is off., High Rate series offering extra-durable stable performance under high rate discharge.



Specification

Cells Per Unit	6
Voltage Per Unit	12
Capacity	360 W@15min-rate to 1.67V per cell @25°C
Weight	Approx. 32Kg
Max. Discharge Current	1000 A (5 sec)
Internal Resistance	Approx. 4 mΩ
Operating Temperature Range	Discharge: -20°C~60°C Charge: 0°C~50°C Storage: -20°C~60°C
Normal Operating Temperature Range	25°C±5°C
Float charging Voltage	13.6 to 13.8 VDC/unit Average at 25°C
Recommended Maximum Charging Current Limit	30 A
Equalization and Cycle Service	14.6 to 14.8 VDC/unit Average at 25°C
Self Discharge	RITAR batteries can be stored for more than 6 months at 25°C. Self-discharge ratio less than 3% per month at 25°C. Please charge batteries before using.
Terminal	Terminal F5/F12
Constainer Material	A.B.S. (UL94-HB), Flammability resistance of UL94-V2 can be available upon request.



MH28539



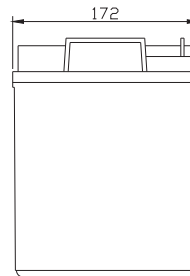
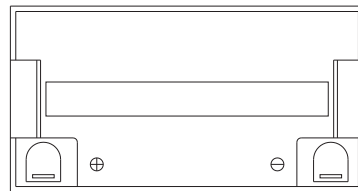
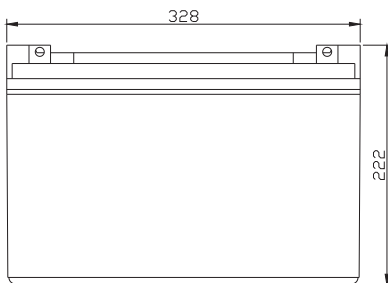
G4M20206-0910-E-16



ISO9001:2000 Certificate

Dimensions

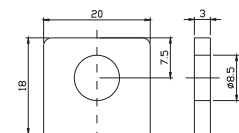
Unit: mm Dimension: 328(L)×172(W)×222(H)



Terminal F12



Terminal F5



Constant Current Discharge Characteristics : A(25 °C)

F.V/Time	2MIN	4MIN	6MIN	8MIN	10MIN	15MIN	20MIN	30MIN	60MIN	90MIN
9.60V	664.1	495.8	386.3	330.2	284.2	209.7	169.0	121.9	65.65	52.38
10.0V	619.0	463.5	360.6	312.9	268.8	200.6	159.1	117.4	63.21	50.57
10.2V	599.7	449.8	349.6	305.3	262.1	196.8	154.9	115.4	62.13	49.67
10.5V	568.4	426.4	338.1	293.9	249.3	190.0	152.5	113.6	61.95	49.04
10.8V	537.2	402.9	326.5	282.3	236.4	183.0	150.1	111.7	61.68	48.49
11.1V	506.0	379.5	315.0	270.8	223.6	176.2	147.8	109.9	61.32	47.86

Constant Power Discharge Characteristics : W(25 °C)

F.V/Time	2MIN	4MIN	6MIN	8MIN	10MIN	15MIN	20MIN	30MIN	60MIN	90MIN
9.60V	7146	5335	4157	3553	3053	2256	1846	1333	717.9	574.4
10.0V	6661	4988	3880	3366	2892	2159	1739	1283	690.8	552.1
10.2V	6453	4840	3761	3286	2820	2118	1692	1261	678.9	541.8
10.5V	6117	4588	3638	3162	2682	2044	1667	1241	676.2	536.4
10.8V	5780	4335	3513	3038	2543	1970	1641	1221	672.4	531.0
11.1V	5443	4083	3390	2915	2405	1895	1616	1200	669.7	525.6

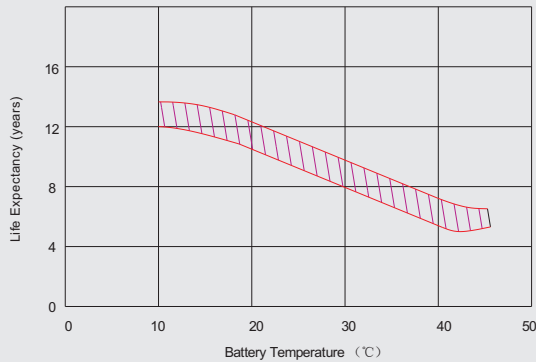
All mentioned values are average values.

RA12-100H

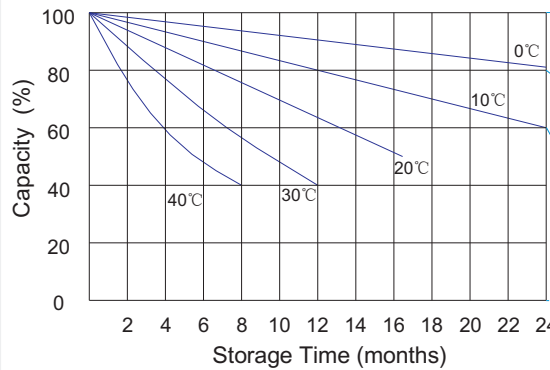
12V100Ah



Effect of temperature on long term float life



Storage characteristic



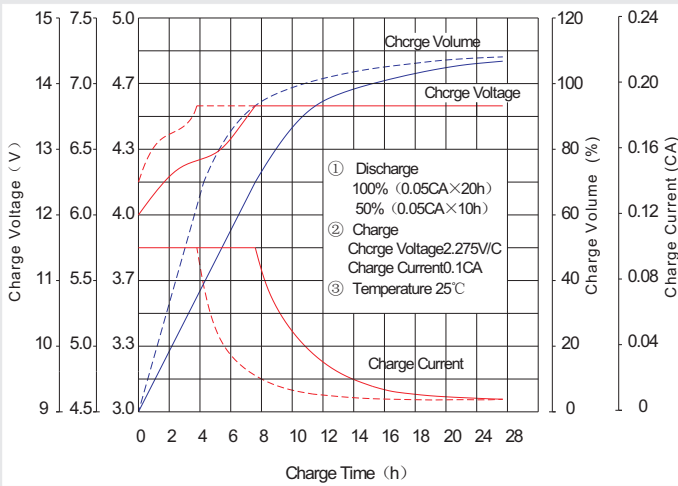
Supplementary charge required (Carry out supplementary charge before use if 100% capacity is required)

Supplementary charge required before use. This supplementary charge will help to recover the capacity and should be made as early as possible.

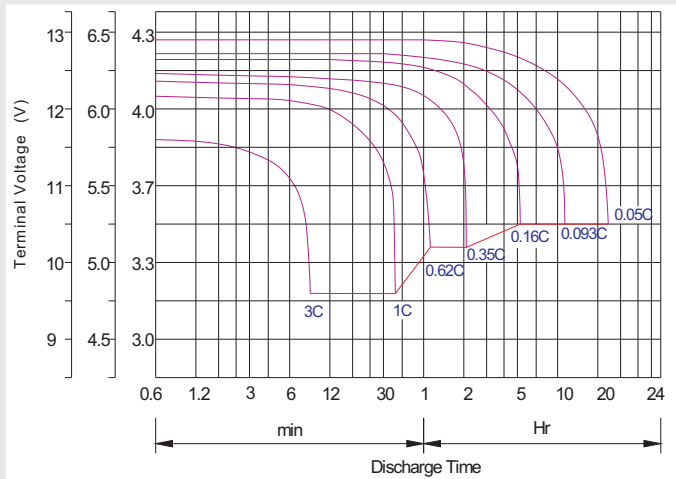
Supplementary charge may often fail to recover the capacity. The battery should never be left standing till this state is reached

Supplementary charge and storage guidelines

Charge characteristic Curve for standby use



Discharge characteristic Curve



Capacity Factors With Different Temperature

Battery Type		-20°C	-10°C	0°C	5°C	10°C	20°C	25°C	30°C	40°C	45°C
GEL Battery	6V&12V	50%	70%	83%	85%	90%	98%	100%	102%	104%	105%
	2V	60%	75%	85%	88%	92%	99%	100%	103%	105%	106%
AGM Battery	6V&12V	46%	66%	76%	83%	90%	98%	100%	103%	107%	109%
	2V	55%	70%	80%	85%	92%	99%	100%	104%	108%	110%

Discharge Current VS. Discharge Voltage

Final Discharge Voltage V/cell	1.75V	1.70V	1.60V
Discharge Current (A)	(A) ≤ 0.2C	0.2C < (A) < 1.0C	(A) ≥ 1.0C

Charge the batteries at least once every six months, if they are stored at 25°C.

Charging Method:

Constant Voltage	-0.2Cx2h + 2.4~2.5V/Cellx24h, Max. Current 0.3CA
Constant Current	-0.2Cx2h + 0.1CAx 12h
Fast	-0.2Cx2h + 0.3CAx4.0h

Maintenance & Cautions

Float Service:

- ※ Every month, recommend inspection every battery voltage.
- ※ Every three months, recommend equalization charge for one time.

Equalization charge method:

Discharge: 100% rate capacity discharge.

Charge: Max. current 0.3CA, constant voltage 2.4-2.45V/Cell charge 24h.

※ Effect of temperature on float charge voltage: -3mV/°C/Cell.

※ Length of service life will be directly affected by the number of discharge cycles, depth of discharge, ambient temperature and charging voltage.